



FY25 Health and Housing Program (HHP) Pilot Information Session



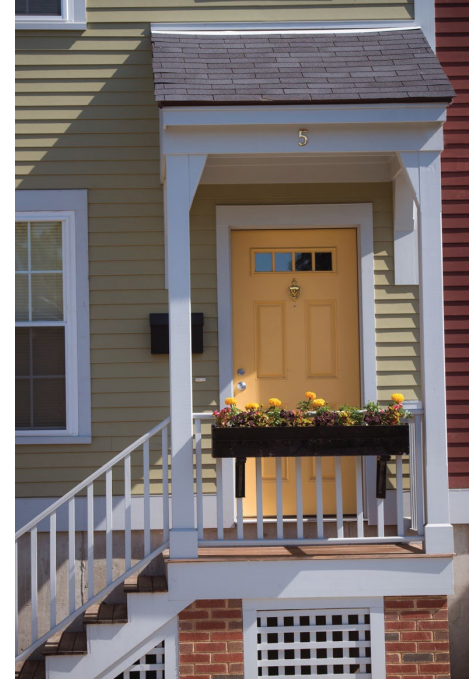
HHP: Program Overview

- Intended to create partnerships between housing developments and healthcare providers to increase positive health outcomes and housing stability
- Pilot (second round – re-releasing RFP) – Hope to learn if having healthcare services easily accessible within the housing development will increase these outcomes
- Models: Co-location of healthcare services or care coordination of healthcare services



Program Overview – Examples

- Mental health services
- Children/youth focused care
- Services for the elderly
- Substance use services
- Management of chronic disease medical needs
- Elderly patients facing complex needs
- Primary healthcare connections and coordination



These are **examples** – RIHousing defers to applicants to determine the healthcare needs of residents and demonstrate that need



Current Grantee

Partnership

Women's Development Corporation/Housing Opportunities Corporation and Wood River Health (WRH)

Development

Shannock Falls, Richmond

Description

- Care Coordination Model
- Community Health Worker onsite – managing health concerns and challenges, connecting to local resources, navigating health insurance, education related to healthcare needs, addressing social determinants of health
- Transportation services to improve access to services and complete errands (WRH facilities, pharmacy, grocery, etc)



Eligibility/Threshold Requirements





- Must be a RIHousing financed development (Attachment A in RFP)
- Housing development cannot be scattered site
- Must have letter of intent between healthcare provider and housing development
- Healthcare worker must provide services **onsite** at the housing development
- Existing development – must be fully occupied by September 30, 2025



Policy Map

- www.rihousing.com/policy-map/

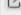
Buyers Owners Renters  Partners About Us 


POLICY MAP

See reports on investments and housing characteristics by the following geographies: Statewide, Congressional District 1, Congressional District 2, State Senate District, State House District, Municipality.

[STATEWIDE REPORT](#)

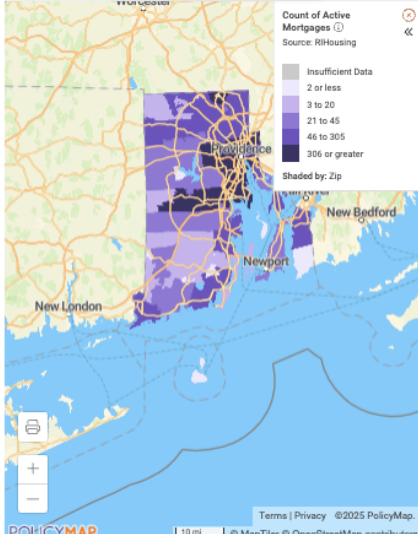
[SEARCH BY DISTRICT/MUNICIPALITY](#)

NEW MAP Location Address, City, County, **REPORTS** 

Count of Active Mortgages 
Source: RIHousing

Insufficient Data
2 or less
3 to 20
21 to 45
46 to 305
306 or greater

Shaded by: Zip



NEW LONDON Providence NEW BEDFORD NEWPORT

Terms | Privacy ©2025 PolicyMap.
POLICYMAP 10 mi © MapTiler © OpenStreetMap contributors
Data mapped by [PolicyMap](#), an online GIS mapping tool.

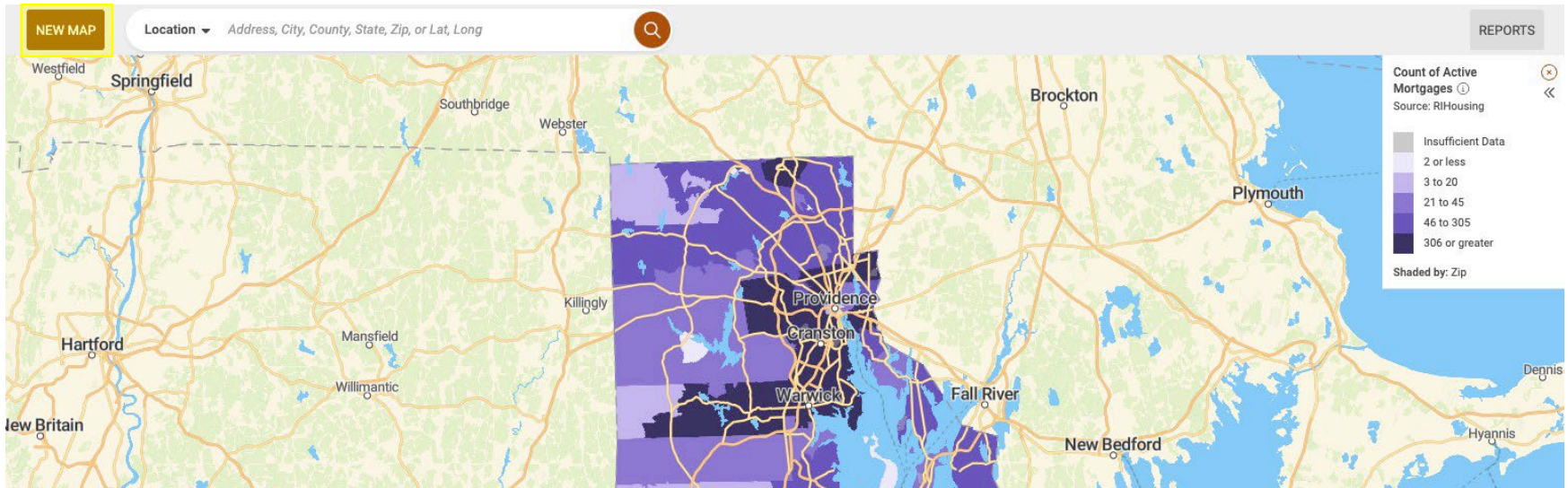
Interactive Mapping Tool

- Users can generate an interactive report summarizing RIHousing programs, demographic trends and housing conditions in their community.
- Users can explore current information and historical trends and see how their community compares to the rest of the state.

Instructional Video



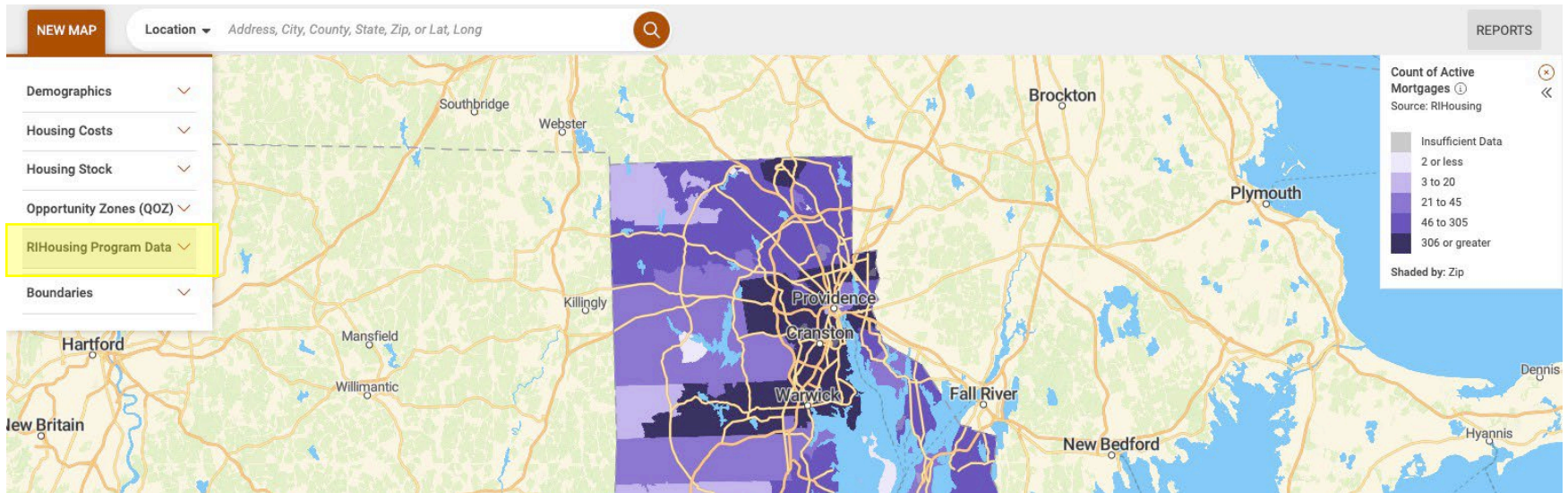
Policy Map



- Click "New Map" located on the upper left hand corner



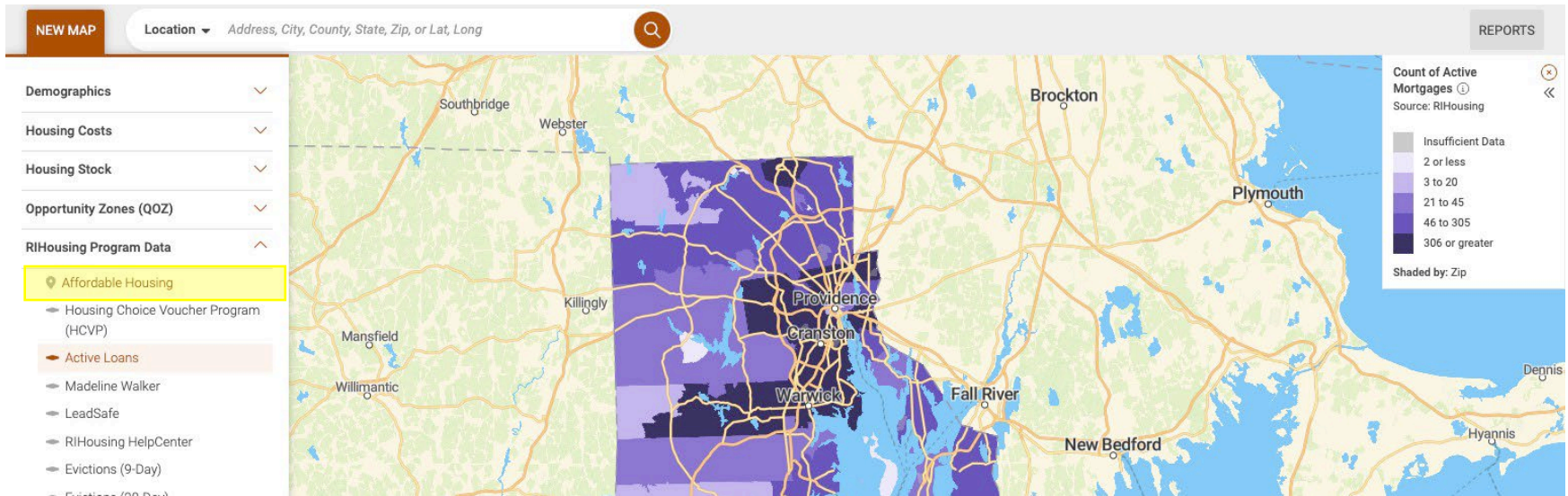
Policy Map



- Click "RIHousing Program Data"



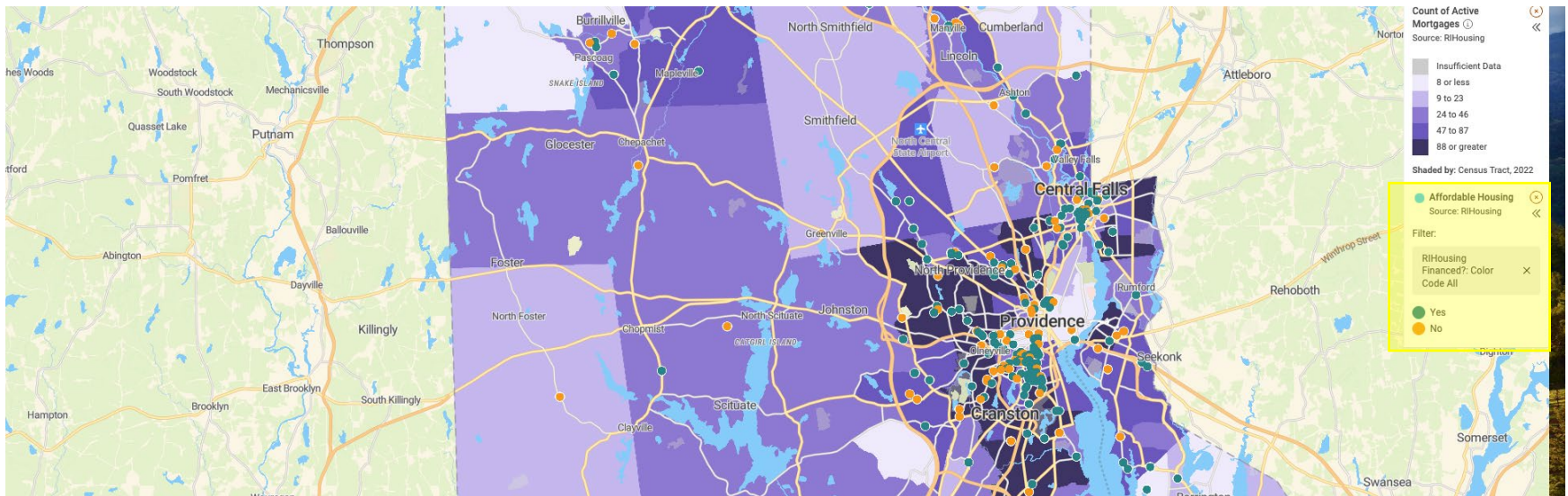
Policy Map



- Click "Affordable Housing"



Policy Map



- You will be able to see all affordable housing. RIHousing-financed affordable developments are color-coded teal.



Changes from previous RFP

- Letter of Intent instead of MOU required for submission
- Four-month implementation phase – can reimburse for this time
- Removed HEZ geographic requirement – 5 bonus points if development is located in a HEZ ([HEZ Map](#))
- Allowing up to 10% of the budget be used towards operating expenses at the housing development in Year 1 only
- Mechanism to express interest and identify partners - <https://tinyurl.com/HealthHousingPartners>



Funding Available

- ~\$500,000
- \$150,000-\$200,000 per award
- Anticipate making 2-3 awards
- 3 year grant term



Application Process

- Application through SmartSheet
- Fill in fields and upload documents
- ALL components of the application must be submitted
 - Narrative
 - Budget document (Attachment D)
 - Certifications (Attachment C)
 - Letter of Intent



In-Person Networking event

Where: The Atrium at Rising Sun Mill
Date: March 6, 2025
Time: 5:30PM – 7:30PM
Who: Housing providers, health care entities, health-related non-profit organizations

- Informal opportunity to meet housing providers and healthcare entities, and speak to RIHousing staff
- Refreshments and cash bar



Questions?



Contact Information

Stacy Wasserman
Innovation Program Manager
swasserman@rihousing.com

